

BASE FLANGE

Zinc-plated die-cast zinc alloy with two holes for assembly with countersunk head screws.

PLUNGER

Nickel-plated AISI 303 stainless steel.
Suggested tolerance for matching hole = H7.

KNOB

High-resilience polyamide based (PA) technopolymer, black colour, matte finish.

FEATURES AND APPLICATIONS

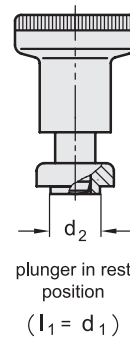
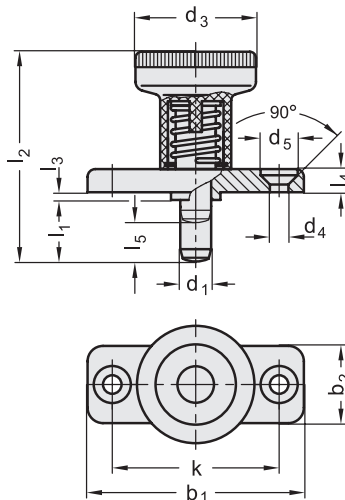
GN 608.6 indexing plungers with rest position have compact dimensions and are particularly suitable for assembly on thin sheets and when the plunger needs to be locked in the retracted position.

SPECIAL EXECUTIONS ON REQUEST

Indexing plungers with RAL 3000 red colour knob.



- 1
- 2
- 3
- 4
- 5
- 6
- 7
- 8
- 9
- 10
- 11
- 12
- 13
- 14
- 15
- 16
- 17
- 18



Conversion Table	
1 mm = 0.039 inch	
d1	
mm	inch
6	0.24
8	0.31

INOX STAINLESS STEEL METRIC

Code	Description	d1		d2 -0.02 -0.1	d3	d4	d5	b1	b2	k	l1	l2	l3 -0.15	l4	l5	Spring preload [N]	Spring max load [N]	Axial holding	
		Plunger -0.02 -0.04	Hole H7															force [N]	
GN.35095	GN 608.6-6-6	6		10	25	4.3	8.3	40	18	30	6	37	2.5	4.5	6	8.5	22	400	23
GN.35096	GN 608.6-6-14	6		10	25	4.3	8.3	40	18	30	14	45	2.5	4.5	6	8.5	22	400	39
GN.35097	GN 608.6-8-8	8		12	31	5.3	10.4	46	20	34	8	44	2.5	5.5	8	15.5	28	500	58
GN.35098	GN 608.6-8-18	8		12	31	5.3	10.4	46	20	34	18	54	2.5	5.5	8	15.5	28	500	63

Indexing and positioning elements